

ANNUAL REPORT 2025



MESSAGE FROM THE PRESIDENT & EXECUTIVE DIRECTOR

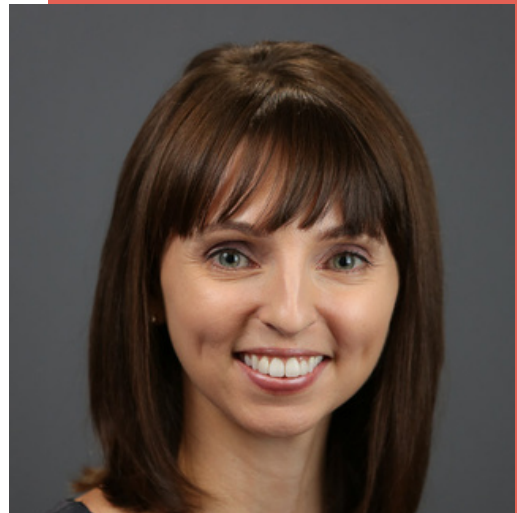
The past year has been an exciting one for Pi Sigma Alpha, filled with growth, innovation, and new opportunities for our students, chapters, and alumni.

Pi Sigma Alpha was proud to welcome six new chapters and induct over 8,600 new members, reflecting the continued strength of our discipline and the dedication of faculty advisors who mentor and support their students. Chapters thrived on campuses by hosting research events, speaker series, and civic engagement activities, supported by more than \$105,000 in Chapter Activity and Civic Engagement Grants. Our National Student Research Conference in Washington, D.C., brought together over 175 undergraduates and master's students from across the country to present their work and participate in activities focused on graduate school, public service, and careers in political science. In addition, over \$20,000 in competitive scholarships supported outstanding graduating seniors pursuing graduate school and students interning in Washington, D.C.

This year also marked important strides in strengthening our organization. We completed the transition to GreekTrack, streamlining membership management and communications for advisors and chapters. At the national level, we introduced new opportunities for alumni to remain active and recognized excellence through the launch of the Pi Sigma Alpha Alumni Award, further connecting generations of members. Dana Parke (Oakland University) has been selected as the inaugural recipient of the Alumni Award, which she will accept as the keynote speaker at our 2026 National Student Research Conference at American University.

Looking ahead, Pi Sigma Alpha remains committed to recognizing academic excellence, fostering student engagement, and promoting scholarship. Whether through national conferences, chapter activities, alumni networks, or opportunities to publish in the Pi Sigma Alpha Undergraduate Journal of Politics, we continue to provide meaningful ways for members to grow as scholars and leaders.

We thank you for being part of this vibrant honor society, and we look forward to another year of achievements together.



Terri L. Towner, PhD
President



Tanya Schwarz, PhD
Executive Director

ABOUT PI SIGMA ALPHA

Pi Sigma Alpha, the national political science honor society, was founded in 1920 to promote political science and support student research. The organization is the premier honor society for students studying political science in the U.S., Canada, and Mexico. Pi Sigma Alpha inducts over 8,000 new student members each year and includes over 830 active campus chapters.

Through a range of programs, the Society celebrates excellence in, and provides support for, students studying political science and related fields (e.g. public policy, public administration, international relations).

MISSION & VALUES

Pi Sigma Alpha's mission is to recognize academic excellence by, and provide leadership opportunities for, undergraduate and graduate students in political science and related fields; to stimulate scholarship and interest in politics, government, and democracy; to encourage diversity, equity, and inclusion in the discipline; and to support curricular and extracurricular activities that promote dialogue and civic engagement.

Pi Sigma Alpha's values are:

- Diversity, pluralism, and inclusion
- Nonpartisanship
- Academic excellence
- A commitment to democratic principles
- Transparency and accountability

STRATEGIC GOALS

In 2023, Pi Sigma Alpha's Executive Committee developed a **strategic plan** for 2023-2027. Key goals from that plan include:

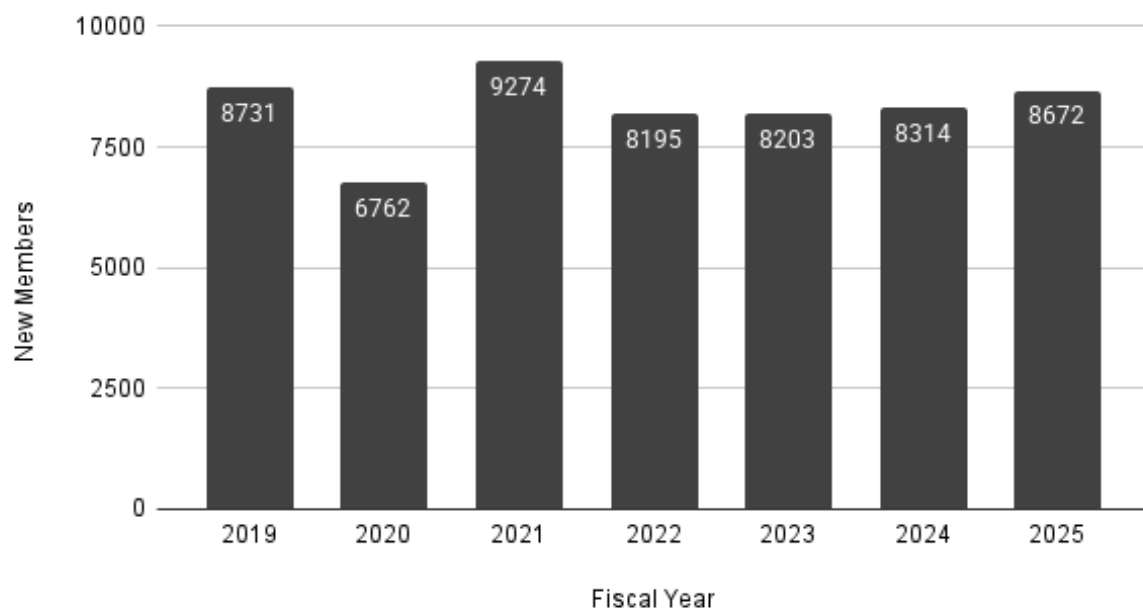
- Increase the number of new and reactivated chapters
- Increase outreach to Minority-Serving Institutions (MSIs)
- Maintain or increase the number of new inductees annually
- Develop strategies to increase diversity at all levels of the organization
- Strengthen programming for and access to the Undergraduate Journal of Politics
- Expand programming for graduate students and alumni members
- Improve resources and support for chapter advisors
- Improve data collection and analysis for Pi Sigma Alpha programs
- Develop an investment strategy for the organization's portfolio

MEMBERSHIP

Membership in Pi Sigma Alpha is for a lifetime. Since 1920, the organization has inducted **over 300,000 members**.

One of Pi Sigma Alpha's strategic goals is to maintain or increase membership year-over-year. We're pleased to report that as of June 2025, the organization's annual membership numbers continue to grow.

New Members by Fiscal Year



MEMBER BENEFITS

Pi Sigma Alpha members gain access to a wide range of member benefits, including:

- Access to scholarships, paper awards, and chapter grants
- Participation in the annual Pi Sigma Alpha National Student Research Conference
- Discounts on association memberships and professional development courses
- Eligibility to start as a GS-7 federal employee
- Graduation regalia to celebrate one's academic achievements

CHAPTER ACTIVITIES

Welcome our new chapters!



Berea College
Carnegie Mellon University
Governors State University
Quincy University
St. Thomas University
Tarleton State University

CHAPTER & CIVIC ENGAGEMENT GRANTS

During the last fiscal year, Pi Sigma Alpha gave out over \$105,000 to 114 chapters via **Chapter Activity**, **Civic Engagement**, **Start-up**, and **Reactivation Grants**. Grant funds supported a range of activities, including Get Out the Vote drives, voter registration drives, election trivia competitions, debate watch parties, essay contests, speaker seminars, and induction ceremonies.



COMMUNITY



BEST CHAPTER AWARDS

Pi Sigma Alpha awards up to six **Best Chapter Awards** in each of four enrollment-level categories annually. The awards come with a \$500 cash prize for the chapter, and an additional cash prize of \$200 for the advisors of the winning chapters for their service. The selection is based on chapters' annual reports to the national office and other evidence of extraordinary levels of activity.

2024-25 AWARDEES

Undergraduate Enrollment < 5,000

LaGrange College (Alpha Alpha Nu)
Sul Ross State University (Omicron Phi)
Texas Lutheran University (Alpha Mu Psi)
Tuskegee University (Tau Chi)
University of Redlands (Alpha Delta Psi)
Virginia State University (Kappa Psi)

Undergraduate Enrollment 5,001-15,000

Columbia University (Mu)
Oakland University (Nu Omega)
Purdue University Northwest (Tau Psi)
Saginaw Valley State University (Alpha Eta Sigma)
University of Central Oklahoma (Sigma Mu)
University of Montana (Epsilon Mu)

Undergraduate Enrollment 15,001-25,000

California State University, Fresno (Alpha Delta Beta)
California State University, San Bernardino (Theta Iota)
Illinois State University (Kappa Sigma)
Oklahoma State University (Delta Kappa)
Stony Brook University (Eta Theta)
The University of Texas at El Paso (Epsilon Epsilon)

Undergraduate Enrollment > 25,000

Auburn University (Epsilon Nu)
Florida International University (Tau Psi)
The Pennsylvania State University (Beta Pi)
The University of Washington (Nu)
San José State University (Epsilon Iota)
University of California, Davis (Delta Upsilon)

CHAPTER ADVISOR AWARDS

Pi Sigma Alpha Faculty Chapter Advisors are critical to the success of the organization. Each year the National Office recognizes outstanding advisors through two awards: The **Best Chapter Advisor Award** recognizes those advisors who have gone above and beyond in the past academic year to support their students. The **James Lengle Advisor Recognition Award** celebrates one faculty member who has served 20+ years and shown exceptional dedication to their chapter.



2024-25 AWARDEES

Best Chapter Advisors

Astin Cole, Tuskegee University (Tau Chi)
Holley Hansen, Oklahoma State University (Delta Kappa)
Yu Ouyang, Purdue University Northwest (Tau Psi) - not pictured
Jessica Velasco, Sul Ross State University (Omicron Phi)

Lengle Advisor Recognition Award

Robb McDaniel, Middle Tennessee State University (Zeta Nu)

STUDENT RESEARCH

A key component of Pi Sigma Alpha's mission is to support student research. To that end, the organization provides a range of programs celebrating and supporting student research.

NATIONAL STUDENT RESEARCH CONFERENCE

Introduced in 2014, the **Pi Sigma Alpha National Student Research Conference** provides a venue for undergraduate and master's student members to present and receive feedback on their research, participate in professional development events, and network with fellow political science students, as well as industry professionals and faculty.

2025 CONFERENCE

Proposal Submissions	Student Presenters	Attendees	Number of Chapters	Number of Panels
239	176	341	104	44



UNDERGRADUATE JOURNAL OF POLITICS

Founded in 2001, the ***Pi Sigma Alpha Undergraduate Journal of Politics*** features groundbreaking research from undergraduate students on a range of topics related to political science and government. The Journal releases two issues per year - one in the fall and one in the spring.

The Journal is currently hosted at Elon University, with the hosting contract ending in 2025. Pi Sigma Alpha is seeking a new institutional home for the Journal. **Submissions will be accepted until October 17, 2025.**



Fall 2024 Issue

“Program Reforms for Empowering Syrian Refugees: Expanding Educational Opportunities and Career Development in Lebanon, Türkiye, and Jordan”

Author: Megan Novak, Emmanuel College

“The 2023 Argentine Presidential Election: Understanding the Victory of Javier Milei via Linkage Mechanisms”

Author: Ty Gribble, University of Texas at Austin

“The Impact of Migrant Concentration and Economic Competition on Attitudes Around Redistribution for Migrants: Venezuelan and Spanish Immigrants in Colombia and Brazil”

Author: Maria Zambrano Davila, University of Richmond

Spring 2025 Issue

“How Limits on Individual Contributions Impact the Competitiveness of State Legislative Elections”

Author: Ishaan Thakker, Yale University

“The Effect of Economic Sanctions on Trade Cooperation between U.S. Sanctions Targets”

Author: Charlotte Thomson, St. Olaf College

“From Coast to Coast and Back Again: Understanding the Lives of Moroccan and Tunisian Returnees”

Author: Joseph Zimble, Gettysburg College

“Movement and Sovereignty: The Separation Wall and the Denial of Palestinian Statehood”

Author: Ryan Cudworth, Union College

BEST PAPER & THESIS AWARDS

Since 1995, Pi Sigma Alpha has reviewed submissions of **class papers and honors theses** from student members and selected winners and runners up based on criteria such as importance and relevance of the topic, originality of research, methodology, and overall quality of writing.

2025 Best Undergraduate Class Paper

Award Committee:

Sharron Herron-Williams (Chair), Southern University at Shreveport
Heather Evans, University of Virginia at Wise
Emily Farris, Texas Christian University

Awardees:

Eline Xia, Stockton University (Winner, Best Qualitative Paper), "Catalysts or Barriers of Change: The Role of Extreme Weather in Climate Adaptation and Mitigation Policies"

Judianne Meredith, Wake Forest University (Runner Up, Best Qualitative Paper), "Competition or Cooperation? The Role of Media Framing in US-China Strategic Narratives"

Kaia Eikenberry, Lewis & Clark College (Winner, Best Quantitative Paper), "Crosses, Crescents, and the Euro: Religion and Resistance to EU Integration In Post-Communist Europe"

Larissa Giacomini, Oakland University (Runner Up, Best Quantitative Paper), "The Relationship Between Restrictive Immigration Policies and Democratic Backsliding"

2025 Best Undergraduate Honors Thesis

Award Committee:

Alecia Hoffman (Chair), Alabama State University
Mike Hendricks, Illinois State University
Melissa Will, Purdue University

Awardees:

Grace Orians, The Ohio State University (winner), "Central to Success: The Impact of Congressional Speech Networks on Legislative Effectiveness"

Chelsea Tabachnik, Columbia University (runner up), "Patchwork Progress: The State-Centered Struggle for Paid Family Leave in the United States"

Justine Orgel, University of Pennsylvania (runner up), "Predicting Backlash: Where Housing and Immigrants Meet"

LEADERSHIP & PROFESSIONAL DEVELOPMENT

Pi Sigma Alpha provides a range of programs that support its members' leadership and professional development and celebrates their achievements in these areas. In addition to the below, the Society **sponsors student and faculty awards** for political science associations across the country.

NANCY MCMANUS WASHINGTON INTERNSHIP SCHOLARSHIP

Pi Sigma Alpha awards five **Nancy McManus Washington Internship Scholarships** annually to members participating in political science internship programs in Washington, DC, for summer, fall, or spring semester. Each scholarship is \$2,000.

Award Committee:

Paul Musgrave (Chair), Georgetown University Qatar
Mandi Bailey, American University
Paul Dosh, Macalester College

Awardees:

Kate Barnes, University of Pennsylvania
Natalie Glezen, University of California, San Diego
David Lawrence, George Washington University
Julianna Mazzella, Quinnipiac University
Braxton Tempest, Oklahoma State University

HOWARD PENNIMAN SCHOLARSHIPS FOR GRADUATE STUDY

Howard Penniman Scholarships for Graduate Study are awarded annually to up to 5 members entering graduate school in political science in the upcoming academic year. Each scholarship is \$2,000.

Award Committee:

Mary Manjikian (Chair), Regent University
Josh Koss, Eastern Michigan University
Renee Van Vechten, University of Redlands

Awardees:

Adachi Love Amaram, North Carolina State University
Dale Eugene Justice, Jr., Eastern Michigan University
Sophia Lander, Columbia University
David Lawrence, George Washington University
Gvantsa Tvaliashvili, La Salle University

ALUMNI AWARD

The Pi Sigma Alpha Alumni Award recognizes alumni who are under the age of 35 and have emerged as leaders through personal and professional achievements in political science and related fields. The awardee receives a plaque and an invitation to be the keynote speaker at the National Student Research Conference. This year was the inaugural year for the Alumni Award. The award committee included Terri L. Towner (President), Diana Owen (Past President), and Rob Alexander (Council Member).

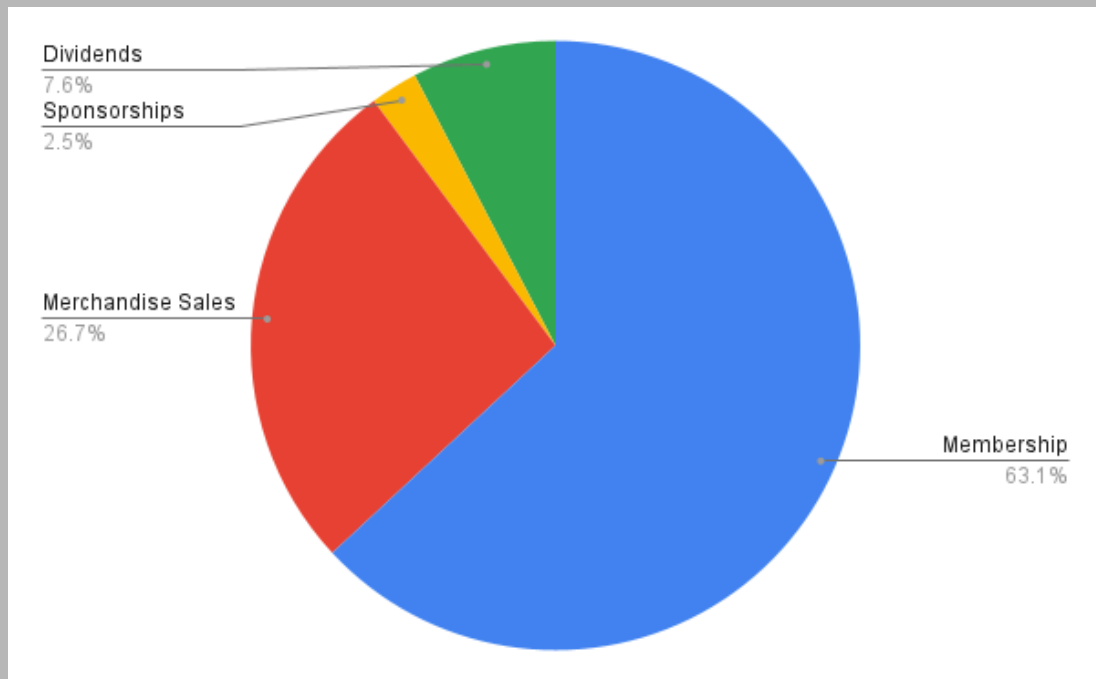


2025 Alumni Awardee, Dana M. Parke, MA (she/her), is a global/public health professional with over 11 years of experience at Henry Ford Health in Detroit, Michigan. Since 2021 she has been Program Manager for Clinical & Social Health Integration, focusing on social determinants of health screening and intervention among primary care patients. She has a passion for housing and works closely with community partners on initiatives including a home repair program to prevent falls among older adults, opening a clinic to serve LGBTQ+ young people experiencing housing insecurity, and volunteering on the Board of her local Housing Commission. For 7 years prior she worked in Henry Ford's Global Health Initiative department, leading capacity strengthening programs globally, including in Haiti and India. She received her B.A. from Oakland University's Honors College in 2013 with a triple major in International Relations, African Studies, and French, where she also spent a semester in Senegal, was the Outreach Editor for the inaugural Pi Sigma Alpha Undergraduate Journal of Politics, and remains an active alumna. In 2020, she obtained her M.A. in International Development, with specializations in Housing and Urban Planning, from the University of Denver, where she received the full-tuition Sié Fellowship and studied housing in South Africa. While in Denver, she also completed the Urban Leaders Fellowship and worked with the Colorado Division of Housing.

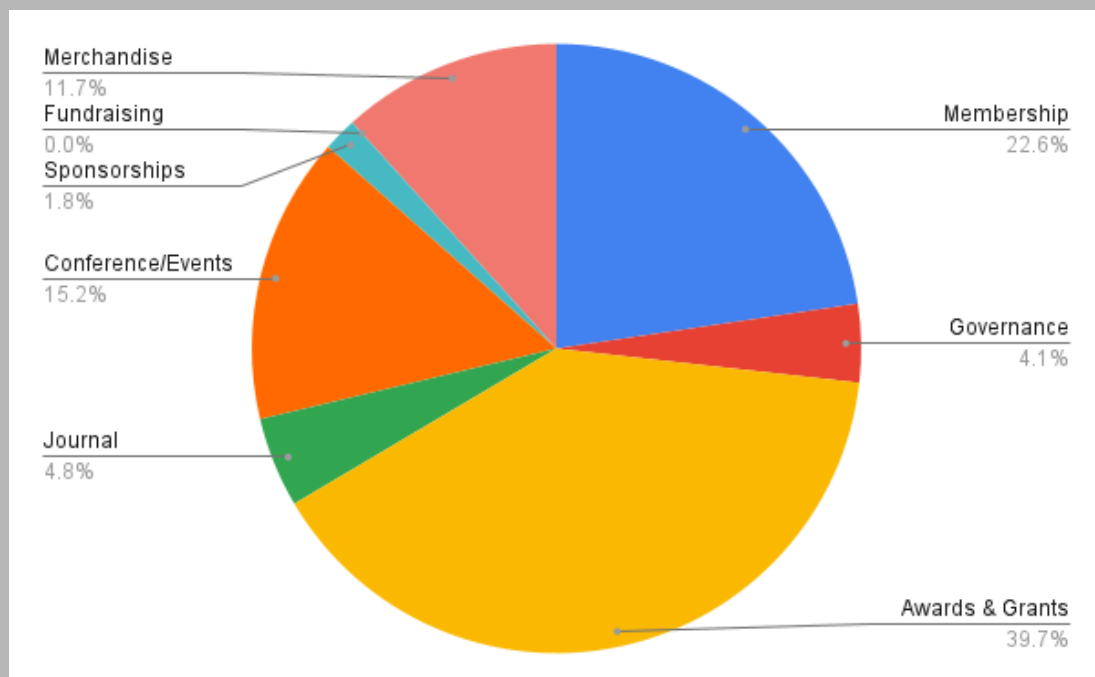
OPERATING EXPENSES

FISCAL YEAR 2025 (ENDING JUNE 30, 2025)

TOTAL REVENUE = \$482,440



TOTAL EXPENSES = \$668,392



**The 2025 deficit can be attributed to increased operational costs and is covered by existing reserve funds.*

COUNCIL & STAFF

EXECUTIVE COUNCIL

Terri L. Towner, President (Oakland University)*
Taeko Hiroi, President Elect (The University of Texas at El Paso)*
Laurel Elder, Treasurer (Hartwick College)*
Diana Owen, Past President (Georgetown University)*
Zoe Oxley, Past President (Union College)
Barış Kesgin, Journal Editor (Elon University)
Robert Alexander (Bowling Green State University)
Amy Below (California State University, East Bay)*
Sharron Herron-Williams (Southern University at Shreveport)
Alecia Hoffman (Alabama State University)
Dwayne Jengelley (Purdue University)*
Seong C. Kang (New Mexico State University)
Mary Manjikian (Regent University)
Paul Musgrave (Georgetown University Qatar)
Neil G. Ruiz (Pew Research Center)
Judith Russell (Columbia University)*
Clarissa Unger (Students Learn, Students Vote)
Everett A. Vieira III (California State University, Fresno)

*Executive Committee members

STAFF

Tanya Schwarz, Executive Director
Erika Kotroba, Manager of Membership & Programs